



Recycling of Waste Materials
into Solid Surface

nebulite solid surface



What is NEBULITE?

NEBULITE is a composite material made of a mixture of organic resins, waste color chips, pigments, additives and fillers made of waste materials. Special catalyst and accelerators are added to cure the mixture either at room temperature or by applying heat. The mixture will be cast into moulds and once cured will produce high quality finished products.

The Uniqueness of NEBULITE:

- Wear resistance
- Stain resistance
- Chemical resistance
- Design flexibility
- Light weight
- Easy cleaning
- Safe
- Flame retardant
- UV stable
- Good impact strength
- Repairable
- Joint less or hair line joint
- Possibility of application both on old and new surfaces

The NEBULITE Advantages

NEBULITE vs. Wood

- NEBULITE is waterproof – can be used for wet kitchen tops and vanity tops
- Joint less or hair line joints
- Easy maintenance; stain and scratch removable
- Chipping and cracking can be repaired
- Superior stain resistance
- Superior chemical resistance
- Fungus free
- Free from termite and insect attacks
- Nicks, cut and scratches can be repaired
- Moisture resistance
- Flame retardant

- Unlimited design of profiles and edges without joints
- Better wear and tear resistance
- Heat resistance

NEBULITE vs. Laminates

- NEBULITE is waterproof; will not delaminate
- Joint less or hair line joint
- Superior stain resistance
- Superior chemical resistance
- Fungus free
- Nicks, cut and scratches can be repaired
- Free from termite and insects attacks
- Heat resistance
- Design flexibility; many combinations of vanity tops and lavatories
- Unlimited design of profiles and edges without joints
- Any severe burn can be repaired

NEBULITE vs. Tiles

- Smooth and flat surfaces
- Easy maintenance with grout or joint to clean
- Superior impact strength and resistance
- Easy to repair
- Joint less or hair line joint
- Light weight
- Chipping and crack can be repaired
- Unlimited design of profiles and edges without joint
- Scratches can be sanded off and buffed to original surfaces
- Can be routed, cut and screwed
- Able be produced in large slabs
- Seamless round design is achievable
- Not brittle
- Design flexibility:
 - Vanity tops, kitchen tops, table tops, counter tops and furniture
 - Unique decorative profiles, edges, inlays and design possibilities

NEBULITE vs. Granite/Marble

- Seamless joints

- Easy maintenance; stain and scratch removable
- Color, appearance and performance consistency
- Unlimited color selections
- Light weight
- Chipping and crack can be repaired
- Superior stain and chemical resistance
- Non porous
- Superior impact strength
- Design flexibility:
 - Vanity tops, kitchen tops, table tops, counter tops and furniture
 - Unique decorative profiles, edges, inlays and design possibilities

NEBULITE – Maintenance, Care and Precautions

Maintenance and Care:

- Clean NEBULITE top with a damp cloth and any household detergent.
- Stains, hard water deposits, cigarette burns and minor scratches can be removed by mild household cleaner or an abrasive pad (3M Scotch-Brite #7447) or fine sand paper (grade 800 and above). Surfaces can be buffed and polished with typical car rubbing compound or paste compound follow by wax or glaze.
- To restore severe damage: Consult the manufacturer for assistance.

Precautions:

- **Scratches and Impact**

NEBULITE is resistant to scratches and impact under normal use. Like any surface, it can be damaged by abuse or carelessness. Therefore, avoid cutting and chopping on NEBULITE surface. The use of cutting board is recommended.

- **Hot Object Protection**

While NEBULITE will not be damaged with inadvertent and short term exposure to extreme heat, it is advised that NEBULITE not be exposed for long periods to temperatures in excess of 175°F. The use of a trivet or other insulating pad is recommended for hot cookware.

- **Chemicals**

Accidental spills or splatter from corrosive materials should be wiped off immediately with and then rinsed with water. Some examples of these items are:

Toilet bowl cleaners

Ceramic cook top cleaners

Rust removers

Metal cleaners

Drain cleaners

Paint or varnish removers

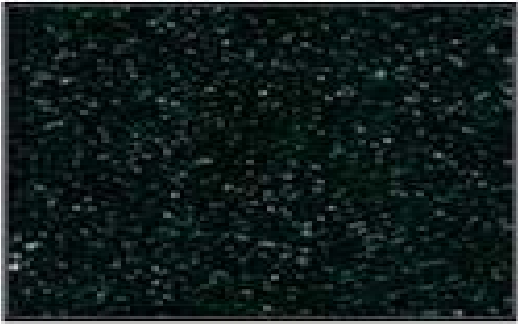
Contact adhesive solvents

Oven cleaners

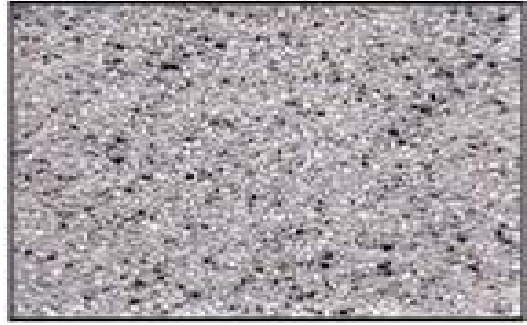
Physical Properties and Technical Data

CHARACTERISTIC	OBSERVATION	IAPMO PS 18-66 REQUIREMENT
Impact resistance	No crack was observed	Shall not show cracks
Workmanship and Finish	Passed	Shall be free from cracks, crazing, pinholes, porosity, blisters, chipped areas or molding defects.
Washability	Slight brush marks were observed on the tested specimen.	Shall withstand 40000 cycles in the scrub test (only slight brush marks are allowable).
Cigarette test	Passed	If all stain has been removed without sanding through the surface, and not more than 0.15 inch has been removed.
Water Absorption	0.27%	Shall not absorb water in excess of 0.58% in 24 hours.
Oven test for cracking or crazing	Passed	No evidence of cracking or crazing should be shown after oven test at 74±20oC for 10 days
Barcol Hardness	43 (Average)	40 minimum
Stain Resistance: coffee, tea, detergent, acetone, olive oil, lipstick, fly spray, ink washable, urea (6%), alcohol, Iodine (1%), shoe polish, vinegar, house ammonia solution (10%), citric acid solution (10%), amyl acetate, carbon tetrachloride and trisodium phosphate (TSP).	All Passed	Shall be such that it will withstand all reagents.

Color Selections



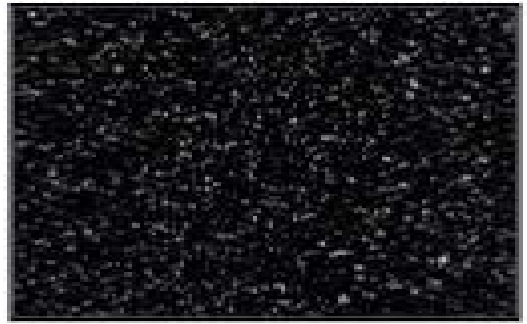
OLIVE



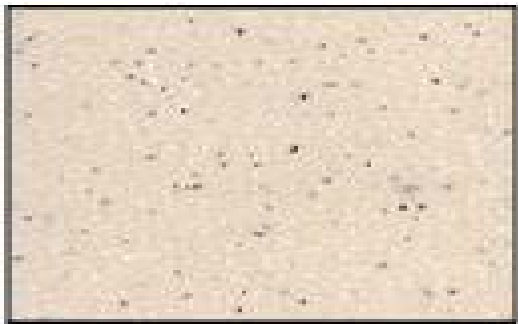
BARRIE



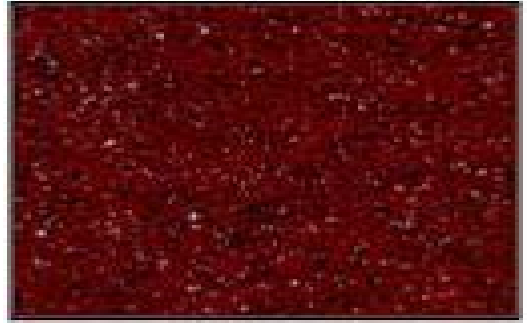
DARK BLUE



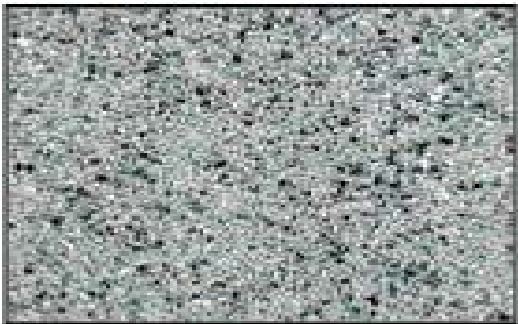
COSMIC



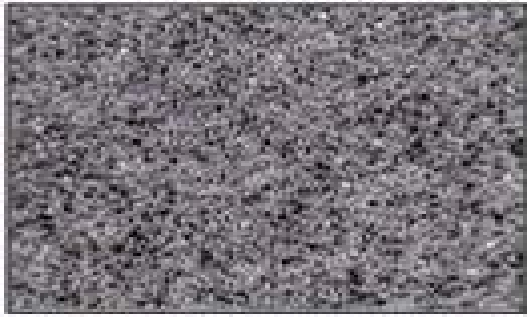
SAND



BEAUNITE



ARTEMITE



NOVA

PICTURE GALLERY

Kitchen Tops



PICTURE GALLERY

Vanity Tops

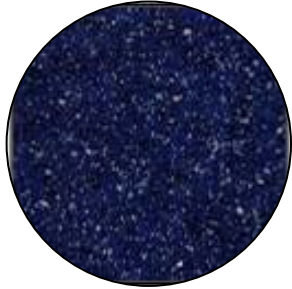


PICTURE GALLERY

Table Tops



TABLE TOP Specifications



ROUND TABLE

Diameter Size: 2 ft. 6 in.
3 ft.
4 ft.
5 ft.



SQUARE TABLE

Size: 3 ft. x 3 ft.
4 ft. x 4 ft.



RECTANGULAR TABLE

Size: 2 ft. 3 in x 2 ft. 9 in.
2 ft. 6 in. x 4 ft.
2 ft. 9 in. x 4 ft. 3 in.

STANDARD VANITY TOP Specifications



ML 600 CO

Length = 600mm
Width (middle) = 500mm
Width (side) = 400mm
Backsplash = 32 mm
Apron = 185mm



ML 530 CI

Length = 530mm
Width (middle) = 450mm
Width (side) = 300mm
Backsplash = 100mm
Apron = 175mm



ML 800 CI

Length = 800mm
Width (middle) = 510mm
Width (side) = 380mm
Backsplash = 40 mm
Apron = 180mm

STANDARD VANITY TOP Specifications



ML 1000 S

Length = 1000mm and above
Width = 600mm
Backsplash = 75mm
Apron = 200mm



ML 1000 CO

Length = 1000mm
Width (middle) = 560mm
Width (side) = 400mm
Backsplash = 75 mm
Apron = 200 mm

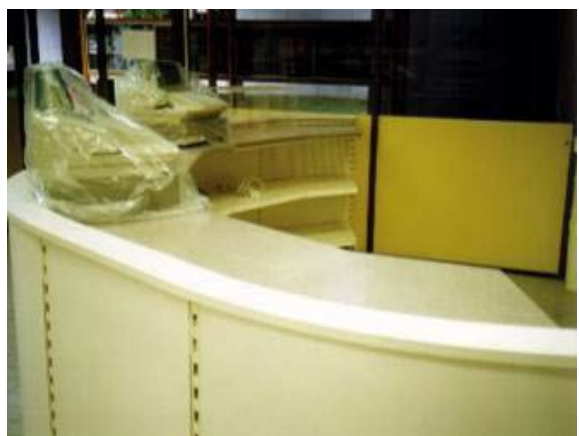


ML 1600 CO

Length = 1600mm
Width (middle) = 560mm
Width (side) = 400mm
Backsplash = 75mm
Apron = 200 mm

PICTURE GALLERY

Counter Tops



PICTURE GALLERY

Polyester Cultured Stones



Disclaimer

All publications of Shepros or bearing Shepros' name contain information, including Codes of Practice, safety procedures and other technical information that were obtained from sources believed by Shepros to be reliable and/ or based on technical information and experience. As such, we do not make any representation or warranty nor accept any liability as to the accuracy, completeness or correctness of the information contained in these publications. While Shepros recommends that its clients refer to or use its publications, such reference to or use thereof by its clients or third parties is purely voluntary and not binding. Shepros makes no guarantee of the results and assume no liability or responsibility in connection with the reference to or use of information or suggestions contained in Shepros' publications. Shepros has no control whatsoever as regards, performance or non performance, misinterpretation, proper or improper use of any information or suggestions contained in Shepros' publications by any person or entity and Shepros expressly disclaims any liability in connection thereto. Shepros' publications are subject to periodic review and users are cautioned to obtain the latest edition.



www.sheprosolution.com